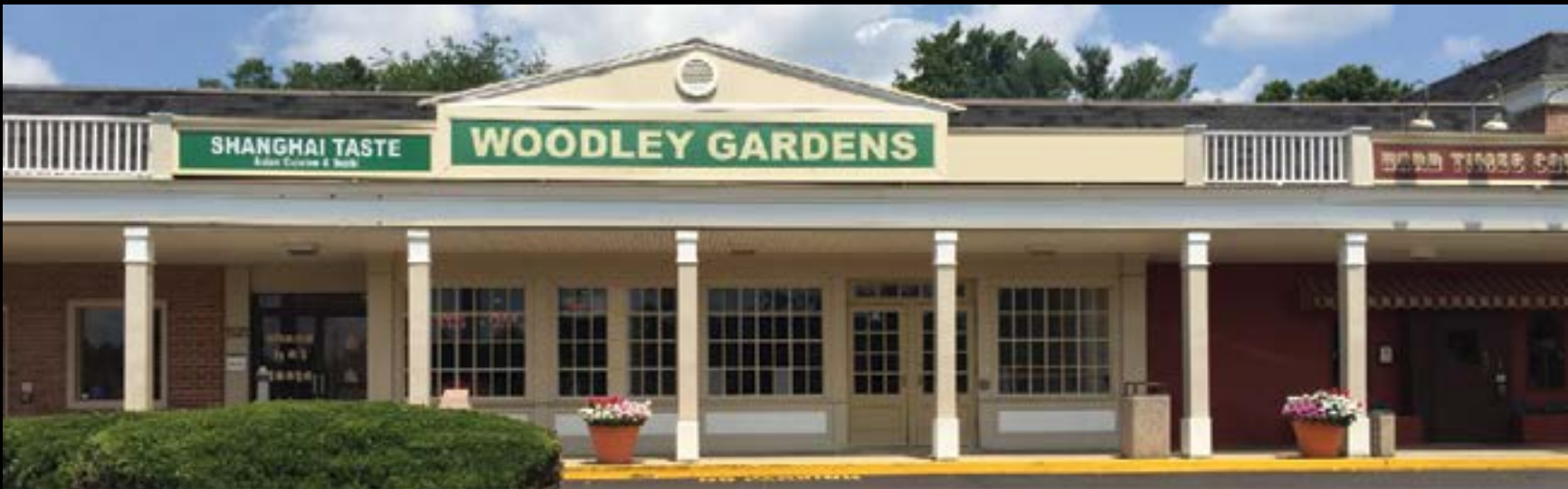


# WOODLEY GARDENS SHOPPING CENTER

1101-1125 Nelson Street  
Rockville, MD 20850

THREE SUITES AVAILABLE



## HIGHLIGHTS

- AVAILABILITY INCLUDES 1,200 SF FORMER BANK ENDCAP SUITE WITH DRIVE-THROUGH
- 3,874 SF AND 1,150 SF SPACES ALSO AVAILABLE
- INCREDIBLE VISIBILITY TO I-270 WITH OVER 232,200 VEHICLES PER DAY
- AVERAGE HOUSEHOLD INCOME OF \$167,700 WITHIN ONE MILE
- CLOSE TO DENSE DAYTIME POPULATION OF 98,500 EMPLOYEES WITHIN THREE MILES



### DEMOGRAPHICS (2019 ESTIMATED)

	1 mile	3 miles	5 miles
Population	13,553	111,092	296,347
Average HH income	\$167,697	\$156,994	\$150,780
Number of employees	7,699	98,495	215,138



## CONTACT

DREW BRISCOE  
(M) 214.673.3577 (O) 202.780.0257  
DB@JCRCOMPANIES.COM